



# Bulk Stainless Steel American

## Allen Screws Stainless Steel

	6/32	8/32	10/24	10/32	1/4 -20	1/4 -28	5/16 -18	5/16 -24	3/8 -16	3/8 -24	7/16 -14	1/2 -13	5/8 -11
3/8	73104	73128	73152	73153	73204						Allen		
1/2	73106	73130	73154	73155	73206	73207	73270		73322				
5/8		73132	73156	73157	73208	73209	73272	73273	73324				
3/4	73110	73134	73158	73159	73210	73211	73274	73275	73326	73327	73374	73414	
7/8		73136	73160	73161	73212		73278		73328				
1	73114	73138	73162	73163	73214	73215	73280	73281	73330	73331	73376	73416	
1 1/4		73140	73166	73167	73218	73219	73284	73285	73334	73335	73378	73418	
1 1/2		73142	73168	73169	73220	73221	73286	73287	73336	73337	73380	73420	73492
1 3/4			73170	73171	73222	73223	73288	73289	73338	73339	73382	73422	73494
2	73122		73172	73173	73224	73225	73290	73291	73340	73341	73384	73424	73496
2 1/4			73174		73226	73227	73292		73342		73386	73426	73498
2 1/2			73176		73228		73294	73295	73344	73345	73388	73428	73500
2 3/4					73230		73296		73346			73430	
3					73232		73298	73299	73348		73392	73432	73504
3 1/2					73236		73302		73352	73353	73396	73436	73508
4					73240		73306		73356	73347	73400	73440	73512



73xxx for  
Stainless Steel  
Allen with Knurls



SP - 73xxx for  
Polished Stainless Steel  
Allen with Knurls  
Removed

## Button Head Allen Screws

	6/32	8/32	10/24	10/32	1/4 -20	1/4 -28	5/16 -18	5/16 -24	3/8 -16	3/8 -24	1/2 -13
1/4	72102	72126	72150	72151							
3/8	72104	72128	72152	72153	72204						
1/2	72106	72130	72154	72155	72206		72270		72322		
5/8		72132	72156	72157	72208		72272				
3/4	72110	72134	72158	72159	72210	72211	72274	72275	72326	72327	
1	72114	72138	72162	72163	72214	72215	72280	72281	72330	72331	72416
1 1/4			72166	72167	72218		72284	72285	72334	72335	72418
1 1/2			72168	72169	72220		72286	72287	72336	72337	72420
1 3/4					72222						
2			72172	72173	72224		72290	72291	72340		72424
2 1/2							72294		72344		72428
3					72232		72298		72348		72432
3 1/2					72236						
4					72240		72306				

72xxx for  
Stainless Steel  
Button Head Allen



SP - 72xxx for  
Polished Stainless Steel  
Button Head Allen

## Flat Head Allen Screws

	6/32	8/32	10/24	10/32	1/4 -20	1/4 -28	5/16 -18	5/16 -24	3/8 -16	1/2 -13	5/8 -11
3/8	71104		71152	71153	71204						
1/2	71106	71130	71154	71155	71206		71270				
5/8		71132	71156	71157	71208		71272				
3/4		71134	71158	71159	71210	71211	71274		71326		
1	71114	71138	71162	71163	71214	71215	71280	71281	71330	71416	71488
1 1/4		71140	71166	71167	71218	71219	71284		71334	71418	71490
1 1/2		71142	71168	71169	71220	71221	71286		71336	71420	71492
1 3/4					71222		71288		71338	71422	71494
2					71224		71290		71340	71424	71496
2 1/2									71344		
3							71298		71348	71432	

71xxx for  
Stainless Steel  
Flat Head Allen



SP - 71xxx for  
Polished Stainless Steel  
Flat Head Allen

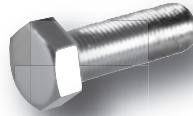
# Bulk Stainless Fasteners American



91

## Hex Caps Screws Stainless Steel

**77xxx**  
for Stainless Steel  
Hex Cap Screws



**SP - 77xxx**  
for Polished Stainless Steel  
Hex Cap Screws

NOTE: 9/16 & 5/8 sizes are not listed on chart but certain sizes may be available upon request.

	4/40	6/32	8/32	10/24	10/32	12/24	1/4 -20	1/4 -28	5/16 -18	5/16 -24	3/8 -16	3/8 -24	7/16 -14	7/16 -20	1/2 -13	1/2 -20
3/8	77088		77128	77152	77153		77204	77205	77268							
1/2		77106	77130	77154	77155	77186	77206	77207	77270	77271	77322	77323				
5/8			77132	77156	77157		77208	77209	77272	77273	77324	77325				
3/4			77134	77158	77159		77210	77211	77274	77275	77326	77327			77414	
7/8			77136				77212	77213	77278	77279	77328	77329				
1		77114	77138	77162	77163	77194	77214	77215	77280	77281	77330	77331	77376	77377	77416	77417
1 1/4				77166	77167		77218	77219	77284	77285	77334	77335	77378	77379	77418	77419
1 1/2			77142	77168	77169		77220	77221	77286	77287	77336	77337	77380	77381	77420	77421
1 3/4							77222	77223	77288	77289	77338	77339	77382	77383	77422	77423
2							77224	77225	77290	77291	77340	77341	77384	77385	77424	77425
2 1/4							77226	77227	77292	77293	77342	77343	77386	77387	77426	77427
2 1/2							77228	77229	77294	77295	77344	77345	77388	77389	77428	77429
2 3/4							77230	77231	77296		77346			77391	77430	
3							77232	77233	77298	77299	77348	77349	77392	77393	77432	77433
3 1/4							77234		77300	77301	77350		77394		77434	77435
3 1/2							77236	77237	77302		77352	77353	77396		77436	77437
3 3/4							77238		77304		77354				77438	
4							77240		77306		77356	77357	77400		77440	77441
4 1/2							77244		77310	77311	77360	77361	77404		77442	77443
5							77246		77312	77313	77362		77406		77444	
5 1/2									77316		77366				77446	
6							77246-A		77318		77368		77412		77448	

American Bulk Stainless

## Set Screws Plain Steel

	6/32	8/32	10/24	10/32	1/4 -20	1/4 -28	5/16 -18	5/16 -24	3/8 -16	3/8 -24
1/4	47102	47126	47150	47151						
3/8	47104	47128	47152	47153	47204	47205	47268			
1/2	47106	47130	47154	47155	47206	47207	47270	47271	47322	47323
5/8	47108	47132	47156	47157	47208	47209	47272	47273	47324	47325
3/4	47110	47134	47158	47159	47210	47211	47274	47275	47326	47327
1	47114	47138	47162	47163	47214	47215	47280	47281	47330	47331
1 1/4			47166	47167	47218	47219	47284	47285	47334	47335
1 1/2			47168	47169	47220	47221	47286	47289	47336	47337
1 3/4					47222		47288			
2					47224	47225	47290	47291	47340	47341
2 1/2					47228		47294		47344	

Set Screws  
Sold Each



*Stainless Steel Available*



# Bulk Stainless Fasteners American

## Washers Stainless Steel

### Flat Washers

Size	Part #
4	75564
6	75565
8	75566
10	75567
1/4	75569
5/16	75570
3/8	75571
7/16	75572
1/2	75573
5/8	75575
3/4	75576



### AN Washers Small OD

Size	Part #
6	84565
8	84566
10	84567
1/4	84569
5/16	84570
3/8	84571
7/16	84572
1/2	84573
5/8	84575
3/4	84576



### Lock Washers

Size	Part #
4	76564
6	76565
8	76566
10	76567
1/4	76569
5/16	76570
3/8	76571
7/16	76572
1/2	76573
5/8	76575
3/4	76576



### Finishing Washers

Size	Part #
6	78565
8	78566
10	78567
1/4	78569
5/16	78570



### High Collar Lock Washers

Size	Part #
1/4	80569
5/16	80570
3/8	80571
1/2	80573



All Items shown on this page can be purchased individually

## GW Stainless Steel Flat Washers



Thicker than standard flat washers

Size	Part #
1/4	70569
5/16	70570
3/8	70571
7/16	70572
1/2	70573
5/8	70575

Our Stainless Steel washer is thicker than standard flat washers and has a close tolerance ID for a snug fit. It has a standard OD so it can be used anywhere a regular washer was.

## Super Flat Washers

Size	Part #
#6 x 5/8	66108
#8 x 3/4	66134
3/16 x 11/16	66157
3/16 x 3/4	66158
3/16 x 1	66162
3/8 x 1	66330
3/8 x 1 1/4	66334
1/4 x 1	66214
1/4 x 1 1/4	66218
5/16 x 3/4	SP- 66274
5/16 x 1 1/2	66286
3/8 x 7/8	SP- 66328
3/8 x 1 1/2	66336
7/16 x 1	66376
7/16 x 1 1/8	SP- 66377
1/2 x 1 1/4	SP- 66418
1/2 x 1 1/2	66420
1/2 x 2	66424
5/8 x 1 1/2	SP- 66492
5/8 x 1 3/4	66494
3/4 x 1 3/4	66528

(SP-) Super Flat Washers Polished Stainless Steel in that size only

### Internal Lock Washers

Size	Part #
4	82564
6	82565
8	82566
10	82567
1/4	82569
5/16	82570
3/8	82571
7/16	82572
1/2	82573
5/8	82575



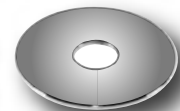
### External Lock Washers

Size	Part #
4	83564
6	83565
8	83566
10	83567
1/4	83569
5/16	83570
3/8	83571
7/16	83572
1/2	83573
5/8	83575



### External Countersunk Washers

Size	Part #
6	89565
8	89566
10	89567
1/4	89569
5/16	89570



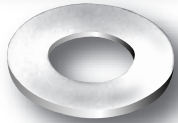


**American Bulk Stainless**

## Washers Stainless Steel

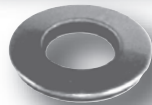
### White Nylon Flat Washers

Size	Part #
8	87566
10	87567
1/4	87569
5/16	87570
3/8	87571
7/16	87572
1/2	87573
5/8	87575



### Neoprene Backed Flat Washers

Size	Part #
8	81566
10	81567
1/4	81569
5/16	81570
3/8	81571
1/2	81573



*Available in  
Stainless Steel Polished  
Add SP-81xxx*

### Pipe Plugs Allen Style

Size	Part #
1/8	86588
1/4	86569
3/8	86571
1/2	86573
3/4	86576



### Threaded Rod Stainless Steel

Size	Part #
6/32	63122
8/32	63148
10/24	63180
10/32	63181
1/4-20	63232
1/4-28	63233
5/16-18	63298
5/16-24	63299
3/8-16	63348
3/8-24	63349
7/16-14	63392
7/16-20	63393
1/2-13	63432
1/2-20	63433
5/8-11	63504

Threaded Rod  
Sold in Three Foot Lengths

All Items shown on this page can  
be purchased individually

## Nuts Stainless Steel

### Acorn Nuts

Size	Part #
6/32	68538
8/32	68540
10/24	68542
10/32	68543
1/4-20	68546
1/4-28	68547
5/16-18	68548
5/16-24	68549
3/8-16	68550
3/8-24	68551
7/16-14	68552
7/16-20	68553
1/2-13	68554
1/2-20	68555
5/8-11	68558
5/8-18	68559



### Castle Nuts

Size	Part #
3/8-24	81551
1/2-13	81554
1/2-20	81555
5/8-11	81558



*For Stainless Steel Polished  
order with the Prefix than five digit  
Part # SP-xxxxx*

### Hex Nuts

Size	Part #
6/32	70538
8/32	70540
10/24	70542
10/32	70543
1/4-20	70546
1/4-28	70547
5/16-18	70548
5/16-24	70549
3/8-16	70550
3/8-24	70551
7/16-14	70552
7/16-20	70553
1/2-13	70554
1/2-20	70555
9/16-12	70556
9/16-18	70557
5/8-11	70558
5/8-18	70559
3/4-10	70560
3/4-16	70561



### Nylon Lock Nuts

Size	Part #
4/40	69536
6/32	69538
8/32	69540
10/24	69542
10/32	69543
1/4-20	69546
1/4-28	69547
5/16-18	69548
5/16-24	69549
3/8-16	69550
3/8-24	69551
7/16-14	69552
7/16-20	69553
1/2-13	69554
1/2-20	69555
9/16-12	69556
9/16-18	69557
5/8-11	69558
5/8-18	69559
3/4-10	69560
3/4-16	69561





## Nuts Stainless Steel

### Jam Nuts

Size	Part #
1/4-20	67546
1/4-28	67547
5/16-18	67548
5/16-24	67549
3/8-16	67550
3/8-24	67551
7/16-14	67552
7/16-20	67553
1/2-13	67554
1/2-20	67555
9/16-18	67557
5/8-11	67558
5/8-18	67559
3/4-16	67561
3/4-10	67560



### Jam Locknuts

Size	Part #
1/4-20	66546
1/4-28	66547
5/16-18	66548
5/16-24	66549
3/8-16	66550
3/8-24	66551
7/16-14	66552
7/16-20	66553
1/2-13	66554
1/2-20	66555
5/8-11	66558
5/8-18	66559
3/4-16	66561



### Spin Locks

Size	Part #
1/4-20	65546
5/16-18	65548
5/16-24	65549
3/8-16	65550
3/8-24	65551



**When only the very Best Fasteners will Do!**



American Bulk Stainless

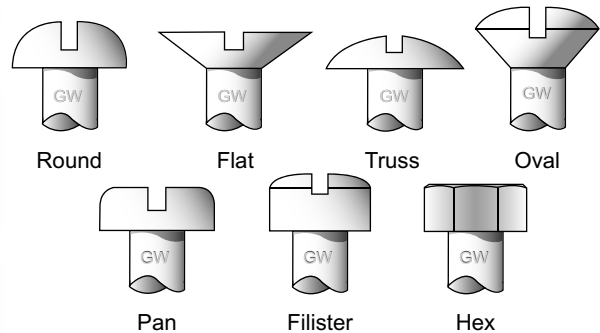
## Machine and Sheet Metal Screws Stainless Steel

**Example:** To order a 8/32 x 5/8 Oval Phillips Machine Screw: Use **Chart #1** for head style required, take those first two digits for the beginning part number which would be "40" Now look up the diameter and length from **Chart #2 or #3** for last three digits for 8/32 x 5/8 is "132" Put the two together for a part number of **89132**, or simply order by style and size.

**Chart #1: Select Styles**

Style	Stainless Steel Slotted	Stainless Steel Phillips
Round Head	99	95
Flat Head	98	94
Truss Head	93	80
Oval Head	97	89
Pan Head	96	92
Fillister	78	n/a
Hex	77	n/a
Round Wood	83	n/a
Flat Wood	85	n/a
Oval Wood	84	81

Include the prefix SP-XXXXX for Stainless Steel Polished



**Chart #2: Machine Screw Sizes**

	6/32	8/32	10/24	10/32	12/24	1/4 -20	1/4 -28	5/16 -18	5/16 -24	3/8 -16
3/8	104	128	152	153	184	204				
1/2	106	130	154	155	186	206		270		
5/8		132	156	157	188	208	209			
3/4	110	134	158	159	190	210	211	274	275	
7/8		136	160	161	192	212			279	
1	114	138	162	163	194	214	215	280	281	330
1 1/4	116	140	166	167	196	218	219	284	285	334
1 1/2	118	142	168	169	198	220	221	286	287	336
1 3/4			170	171		222		288	289	338
2	122		172	173		224		290	291	340



Machine Screw

Head Styles: Oval, Flat or Pan  
Note: Not all styles available in all sizes

**Chart #3: Sheet Metal & Wood Screw Sizes**

	#6	#8	#10	#12	#14
1/2	616	628	641	654	667
5/8	617	629	642	655	668
3/4	618	630	643	656	669
1	620	632	645	658	671
1 1/4	621	633	646	659	672
1 1/2	622	634	647	660	673
1 3/4	623	680	648	661	674
2	624	635	649	662	675
2 1/4	625	636	650	663	676
2 1/2	626	637	651	664	677



Sheet Metal Screw



Woodscrew